

# Hiab XS 044 CLX

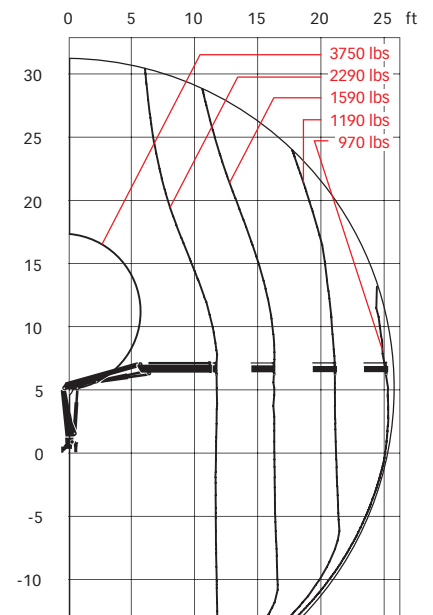
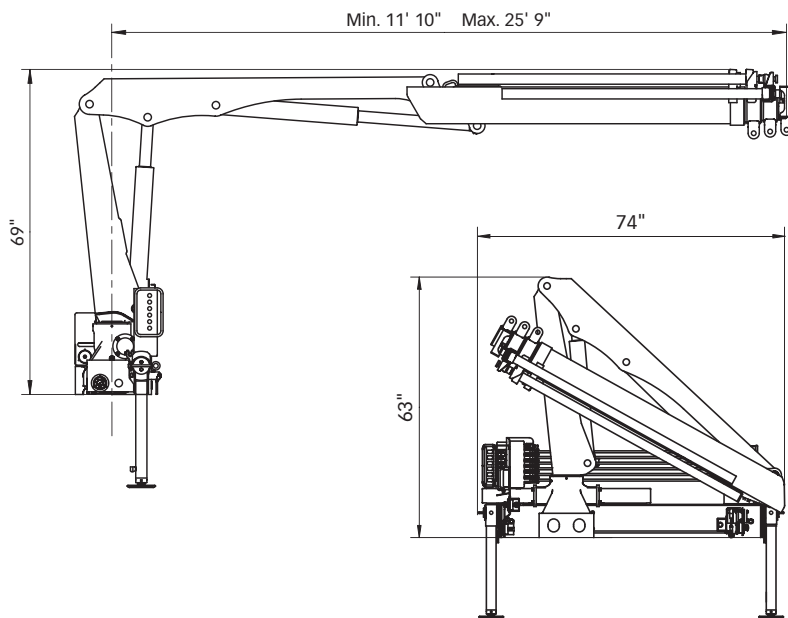
Range 26,630–28,800 ft-lbs



# Hiab XS 044 CLX Basic data

Technical data	D-1 CLX	D-2 CLX	D-3 CLX	D-4 CLX
Max. lifting capacity (ft-lbs)	28,800	27,860	27,210	26,630
Outreach - hydraulic extensions	15' 8"	20' 9"	25' 9"	30' 10"
Outreach - manual extensions	25' 7"	30' 10"	30' 10"	-
Outreach / lifting capacity, standard (ft / lbs)	6' 11" / 4,140	7' 3" / 3,840	7' 3" / 3,750	8' 10" / 3,000
	11' 6" / 2,510	11' 6" / 2,430	11' 6" / 2,290	11' 6" / 2,160
	15' 5" / 1,850	15' 9" / 1,720	15' 9" / 1,590	15' 9" / 1,500
	-	20' 4" / 1,320	20' 4" / 1,190	20' 4" / 1,100
	-	-	25' 3" / 970	25' 3" / 860
	-	-	-	29' 10" / 730
Slewing angle	380°	380°	380°	380°
Height in folded position	63"	63"	63"	63"
Width in folded position	74"	74"	74"	74"
Installation space needed	21"	21"	23"	24"
Weight - "standard" crane without stabilizers (lbs)	990	1,090	1,190	1,270
Weight - stabilizer equipment (lbs)	120	120	120	120

## Hiab XS 044 D-3 CLX



**Disclaimer.** Hiab cranes have been built to meet the highest standards of safety and service life and have been thoroughly tested. Strength calculations for this model have been carried out in accordance with EN13001 in fatigue class S1. Cargotec's certified Quality Assurance System complies with ISO 9001. Some of the items in our literature may be extra equipment. Certain applications may require an official permit. We reserve the right to change technical specifications without prior notice. Hiab cranes produced for EU-countries are CE-marked and comply with the European Standard EN 12999.

**Cargotec** improves the efficiency of cargo flows by offering solutions for the loading and unloading of goods on land and at sea – wherever cargo is on the move. Cargotec's main daughter brands for cargo handling Hiab, Kalmar and MacGregor are global market leaders in their fields. [www.cargotec.com](http://www.cargotec.com)